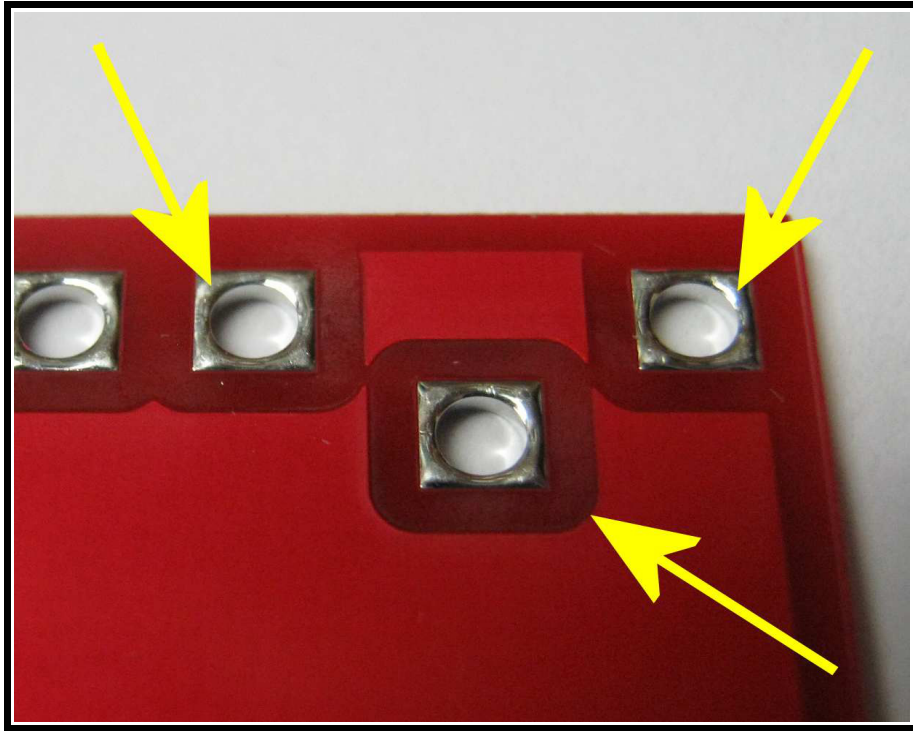
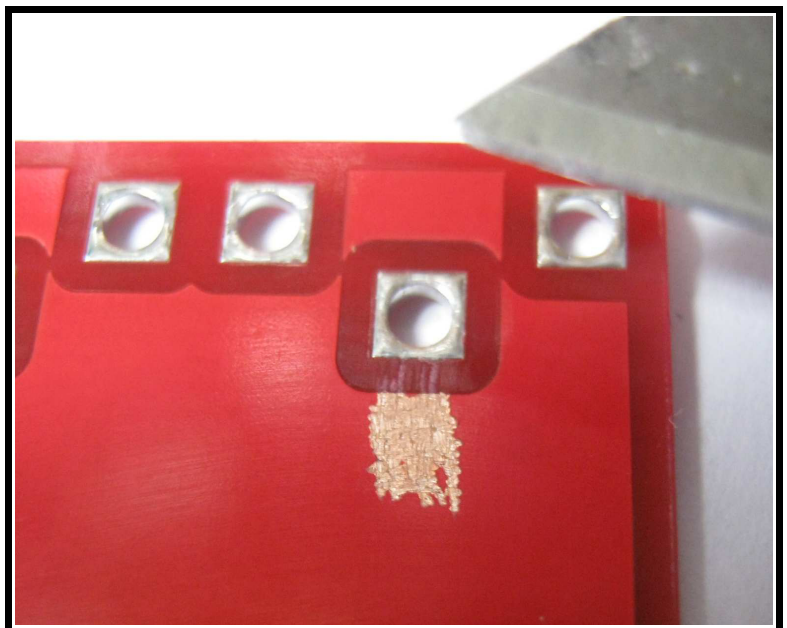


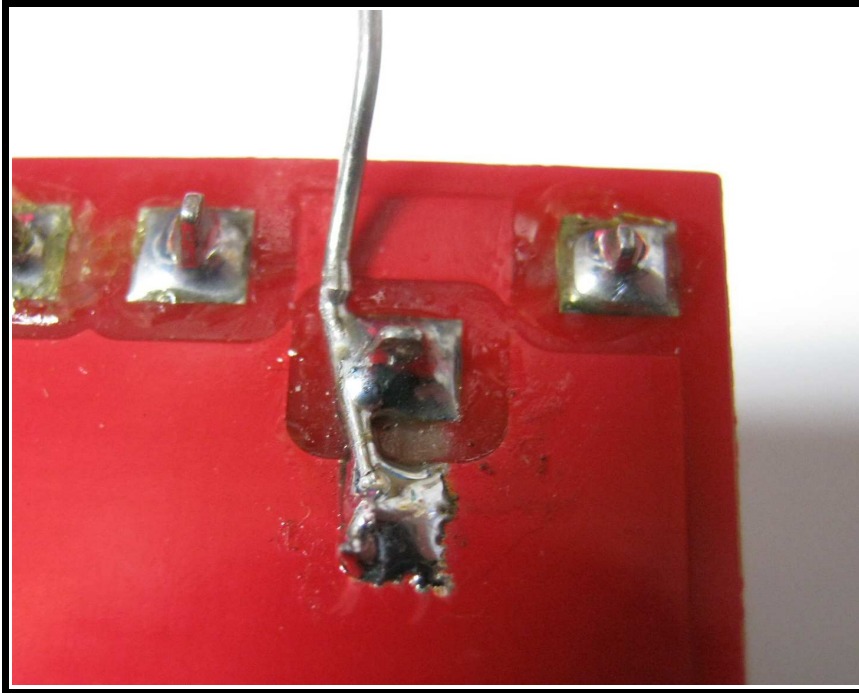
OOPSIE DAISEYS!



I ACCIDENTALLY LEFT OFF THE GROUND RAYS FOR THE NEGATIVE SIDE OF THE BATTERY!! NOW YOU GET TO LEARN SOMETHING REALLY USEFUL...

Very carefully, scrape off just the red solder mask coating just below the center terminal of the 9 volt negative snap. You just need a little patch to make a solder patch.



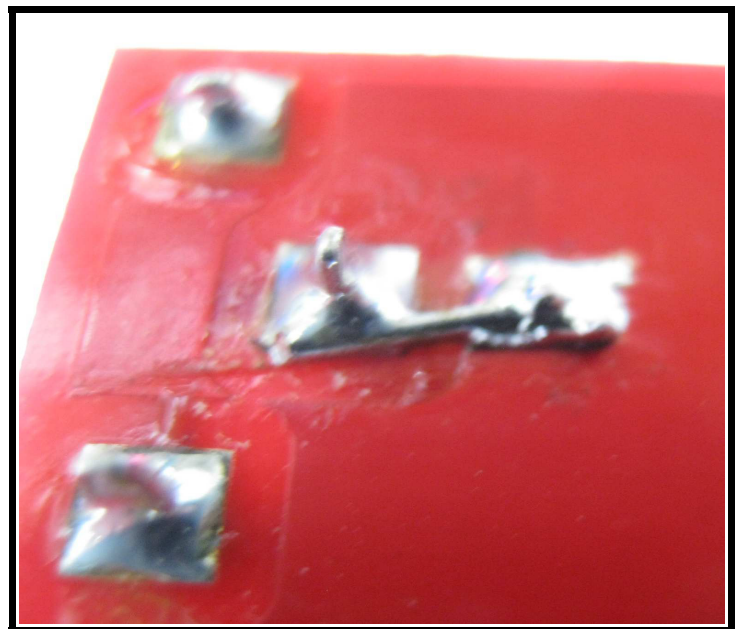


You can then use a little piece of a resistor or inductor lead to bridge the terminal to the ground plane. Pre-tin the little patch area with solder and also pre-tin the lead from the tip to where it will solder to the battery snap.

Solder the lead to the ground patch first and when that cools down bend it to fit beside the center terminal and quickly solder it there.

Cut off the excess lead and now the battery's negative terminal is connected to ground as it should!

Sorry about that....but now you know how to make simple mods to a production circuit board!



Rex W1REX